



2021-2022

PCRS Annual Report



PACIFIC COAST
REPRODUCTIVE
SOCIETY

OUTGOING PRESIDENT'S MESSAGE

Aloha PCRS Ohana,

Wow, the past three years have been the most unique and challenging times that many of us have ever faced in our personal and professional careers. However, the world has persevered, and so have we as a reproductive society. At our 70th Annual Pacific Coast Reproductive Society meeting in March 2022, we held the first in-person PCRS meeting since 2019, and with 410 attendees, we had record attendance. It was truly invigorating to interact in person once again.

Over the past year, there have been many new initiatives within the Pacific Coast Reproductive Society. The most significant is the advanced practice provider initiative and the PCRS research grant awards. PCRS has always celebrated and welcomed the role that allied and other health professionals afford in providing care to patients within the REI practice. More and more REI practices are utilizing advanced practice providers to support patient care. This past year, PCRS launched an initiative to focus on and include the advanced practice providers even more within our curriculum. Thanks to a Ferring Pharmaceuticals' Educational Grant, PCRS was enthusiastically offered the inaugural PCRS research grants immediately following the 2021 meeting. PCRS awarded a total of \$20,000.00 in research grants to two deserving applicants. The awards will fund science that promises to expand care within our specialty.

As outgoing PCRS president, I have so many people to thank that contributed to the success of PCRS during my presidential term. I wish to give a heartfelt thanks to our extraordinary Board of Directors for their devotion to our society and the support they provided to me during my presidential term. The PCRS Planning Committee accomplished an astonishing feat in planning our 2022 meeting and scheduling the many novel presentations and debates. We must never forget our generous industry sponsors and exhibitors who afford tremendous support that empowers us to deliver our PCRS annual meeting. Likewise, behind the scenes, our management company, SBI, specifically Felicia Kenan and Katie Berry, were particularly contributory to the success of the 2022 PCRS meeting.

Again, serving as the PCRS President during the 70th Annual Pacific Coast Reproductive Society meeting was a sincere privilege! Under the accomplished leadership of President Dr. Paul Dudley and President-Elect Tamara Tobias, PCRS has an auspicious future.

Aloha and Mahalo,

John L Frattarelli, M.D., HCLD
PCRS Immediate Past President
Fertility Institute of Hawaii, Honolulu, HI



PRESIDENT'S MESSAGE

PCRS Members & Supporters

We have so many things to look forward to in the future. One being the 2023 Annual Meeting.

The theme for next year's PCRS Annual Meeting is Advocacy and Reproductive Health: Putting Patients First. Lead by Dr. Anatte Karmon, the PCRS Planning Committee is preparing an engaging Program featuring didactic lectures, research presentations, debates, and networking opportunities in the collegial atmosphere only PCRS can offer.

Allow me to highlight two PCRS initiatives and encourage interested parties to apply via the PCRS Website.

- 1. PCRS Research Grants.** PCRS offers Research Grants to support innovative projects in Reproductive Medicine. The two recipients of the 2022 PCRS Research Grants were Dr. Ange Wang from UCSF, and Dr. Ashley Aluko from Cornell. Congratulations to both of you! We applaud your contributions and hope you'll present your findings at a future meeting.
- 2. PCRS Scholarships.** Funded by Member donations and Commercial Sponsors, recipients receive financial support to attend the PCRS Annual Meeting. Medical professionals in training and active-duty military should apply by January 31, 2023.

Speaking of support...let me recognize our Commercial Sponsors. Their commitment to PCRS makes our Society and Annual Meeting possible. Please extend your gratitude in person at the PCRS Exhibitors Hall.

Diamond Sponsor – Ferring Pharmaceuticals

Ruby Sponsor – EMD Serono

Emerald Sponsor – CooperSurgical

Topaz Sponsors – Unify and ExEm Foam Inc/IQ Medical Ventures

Lastly, I offer sincere thanks to the PCRS Board of Directors and SBI Association Management for their time and world-class expertise.

I look forward to greeting you in person at the Renaissance Indian Wells Resort. Registration is now open!

See you March 2023!

Paul S. Dudley, M.D.
President, Pacific Coast Reproductive Society



ORGANIZATIONAL MISSION, VISION, GLOBAL GOALS, VALUES, PURPOSE

OUR STRATEGIC PLANNING PROCESS



Organizational
Mission

STRATEGIC PRIORITIES

What to Achieve

GOALS

How It Might Achieved

POTENTIAL STRATEGIES



PRIORITY PROJECTS

How to Do It



OBJECTIVES WITH
PERFORMANCE
MEASUREMENTS

How Far to Go and
What to Measure

SUPPORTIVE

- Member and Sponsor supported scholarship program for REI Fellows and other trainees to attend Annual Meeting
- Leadership development through Junior and Senior level committee service and Board Directorship
- Concierge service for attendees, exhibitors, and sponsors

INNOVATIVE

- Website enables convenient, time-effective online interactions with members, attendees, faculty, authors, volunteers exhibitors and sponsors
- Program Planning committee members rotate each year to provide fresh and timely educational activities and content

INCLUSIVE

- Complimentary membership to all REI trainees; discounted membership to allied healthcare teammates
- PCRS Board and Committees reflect an inter-professional workforce, including physicians, biologists, nurses, counselors, and practice management
- Members include medical students, residents, fellows, both practicing and retired physician, and allied health professional.

COLLEGIATE

- PCRS Demands an even playing field among REI professionals
- Relationships with SGI, ASRM, CFS, and *Fertility & Sterility* provide gateways of advancement and partnership for PCRS members
- PCRS Annual Meeting Evaluations contribute to efficacy of REI field of medicine

PROFESSIONAL

- PCRS CME is accredited by the Accreditation Council for Continuing Medical Education (ACCME) to provide CME to physicians
- PCRS attendees in reproductive sciences earn ABB PEER credits
- Nurse and genetic counselors may apply for CEUs from their appropriate accrediting bodies with their PCRS certificate of attendance
- Abstracts published by PCRS are peer-reviewed and selected by an inter-professional committee of REI experts

INTIMATE

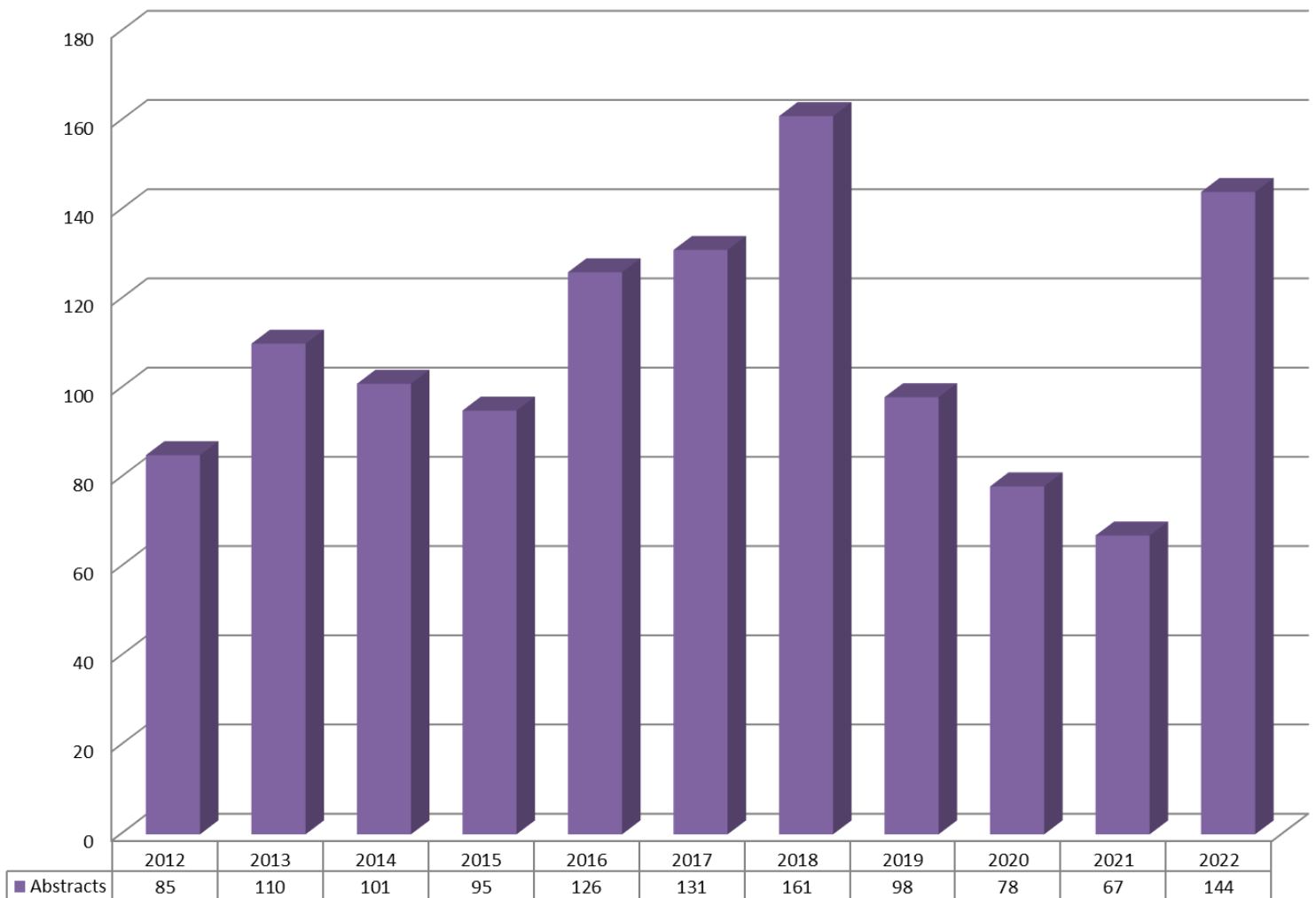
- PCRS sessions teach to the team of individuals in reproductive medicine
- Informal dress code promotes an environment of collegiality and solidarity
- Annual Meeting blends education with networking to allow ample learning and opportunity to build and foster relationships

ABSTRACT SUBMISSION

PCRS continues to be a global, interactive organization promoting leadership and innovation in reproductive medicine within a collegial environment. The annual CME program is based on the integration of clinical practice, scientific research, and education in the field of reproductive medicine.

More than eighty abstracts were selected for oral or poster presentation at the 2022 annual meeting and were also published in a special digital edition of *Fertility & Sterility*.

Abstract Submissions



SCHOLARSHIP PROGRAM

To encourage the participation of medical professionals in-training, particularly fellows specializing in reproductive medicine, PCRS established a Scholarship Program made possible by funding from Society members and commercial sponsors.

Scholarship Types & Eligibility Requirements

MD Scholarship

Open to all fellows in US REI programs, residents, and medical students who have not previously attended PCRS on a scholarship.

Merit Scholarship

Open to any PCRS scholarship winners from previous years who will be the presenting author of an abstract submitted for presentation at the meeting.

REI Lab Scholarship

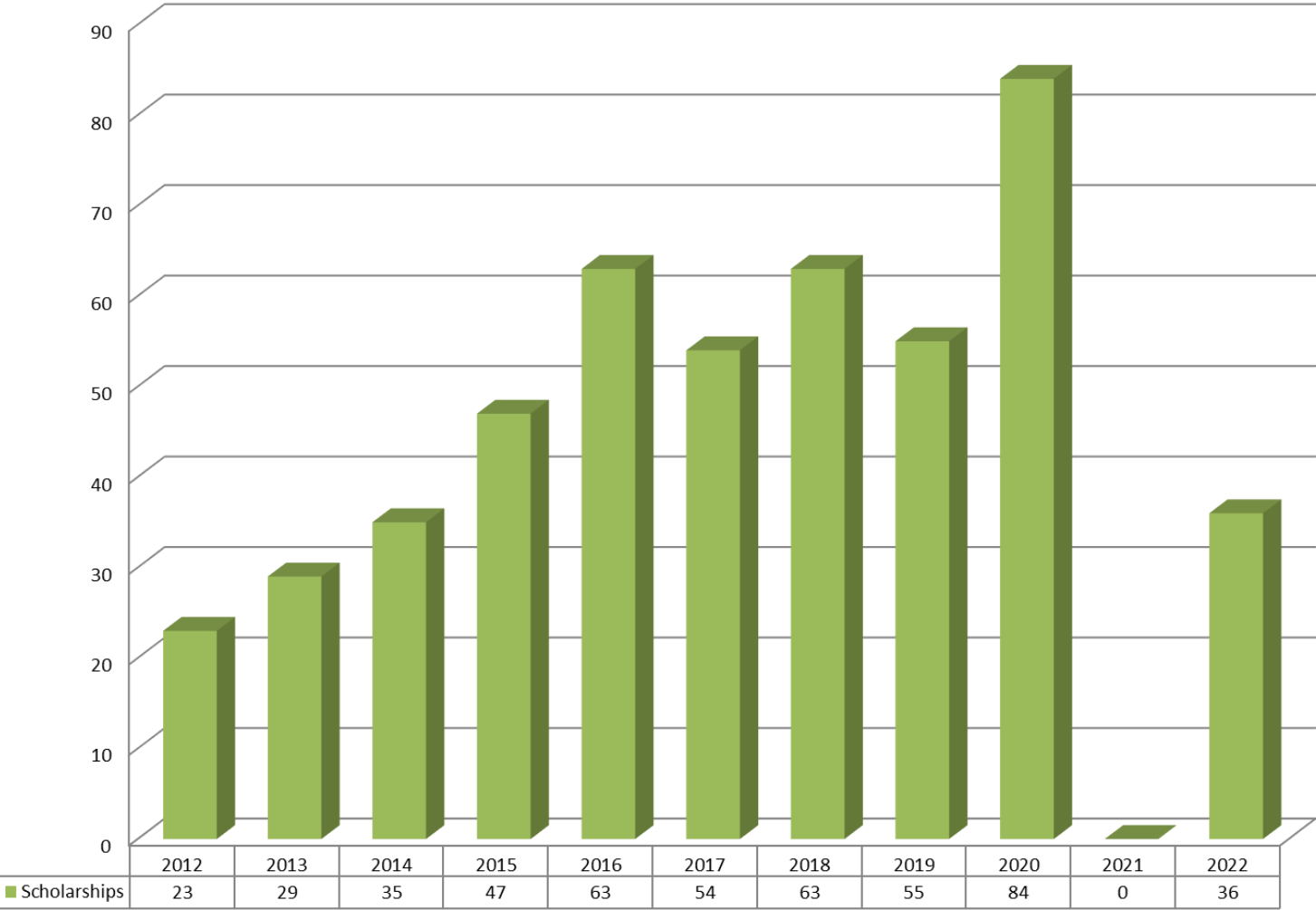
Open to all non-management IVF laboratory professionals who are the presenting author of an abstract submitted for presentation at the meeting.

Nurses and Genetic Counselors

Open to all nurses and genetic counselors who have not attended a PCRS meeting in the past or are the presenting author of an abstract submitted for presentation at the meeting.

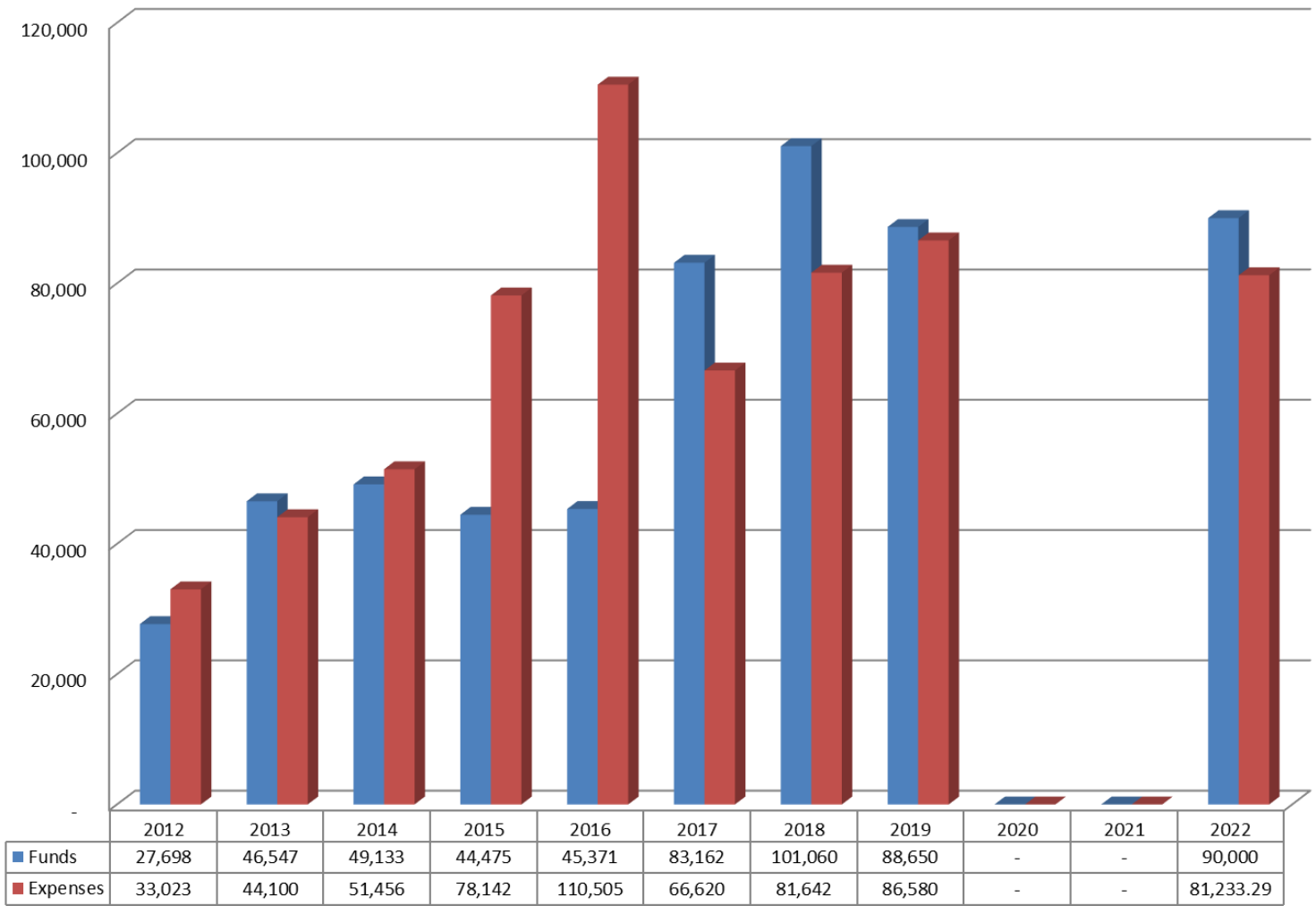
SCHOLARSHIPS AWARDED

Scholarships Awarded



SCHOLARSHIP PROGRAM

Scholarship Program



SPONSORED RESEARCH GRANTS

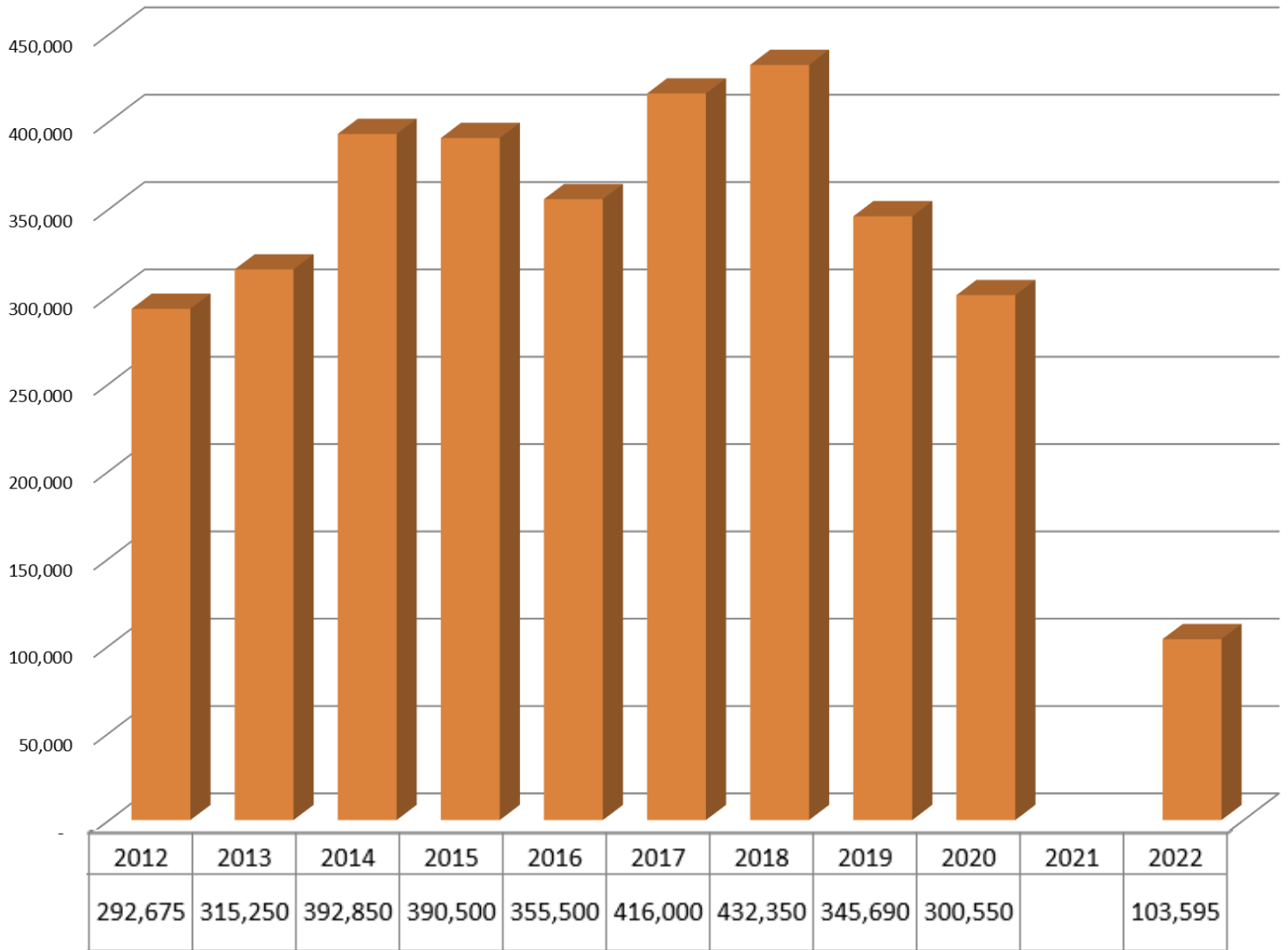
PCRS supports innovative research projects in reproductive medicine for current Reproductive Endocrinology, Infertility Fellows and New Investigators who have completed their professional training in the last three years. The generous donation from Ferring Pharmaceuticals Inc, enables PCRS to award \$20,000 in annual research grants. Funds are available for project expenses, technical assistance, patient express, research supplies, and durable laboratory equipment.

PCRS Research Grants are sponsored by Ferring Pharmaceuticals, Inc.



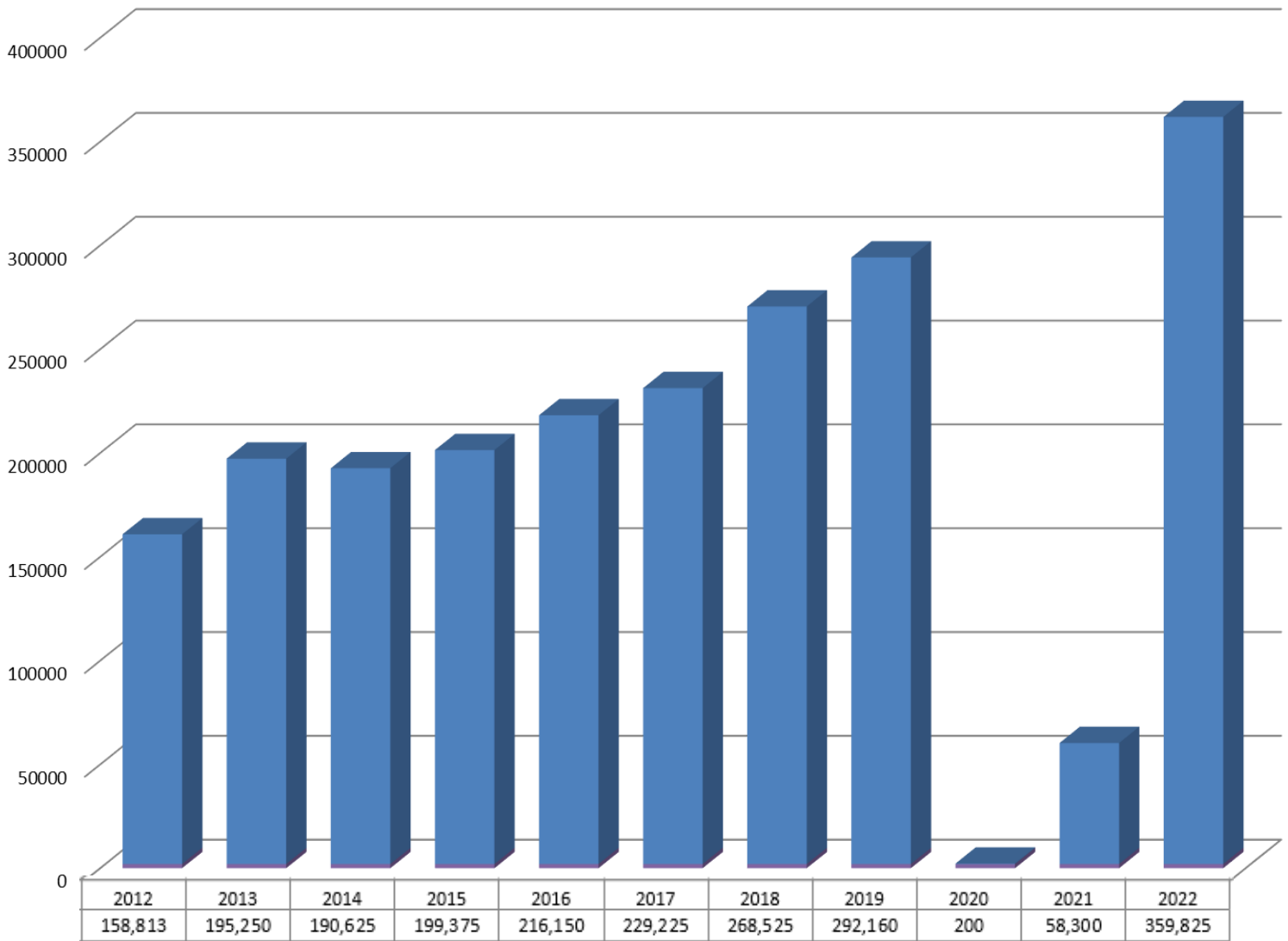
COMMERCIAL SPONSORS

Commercial Sponsors



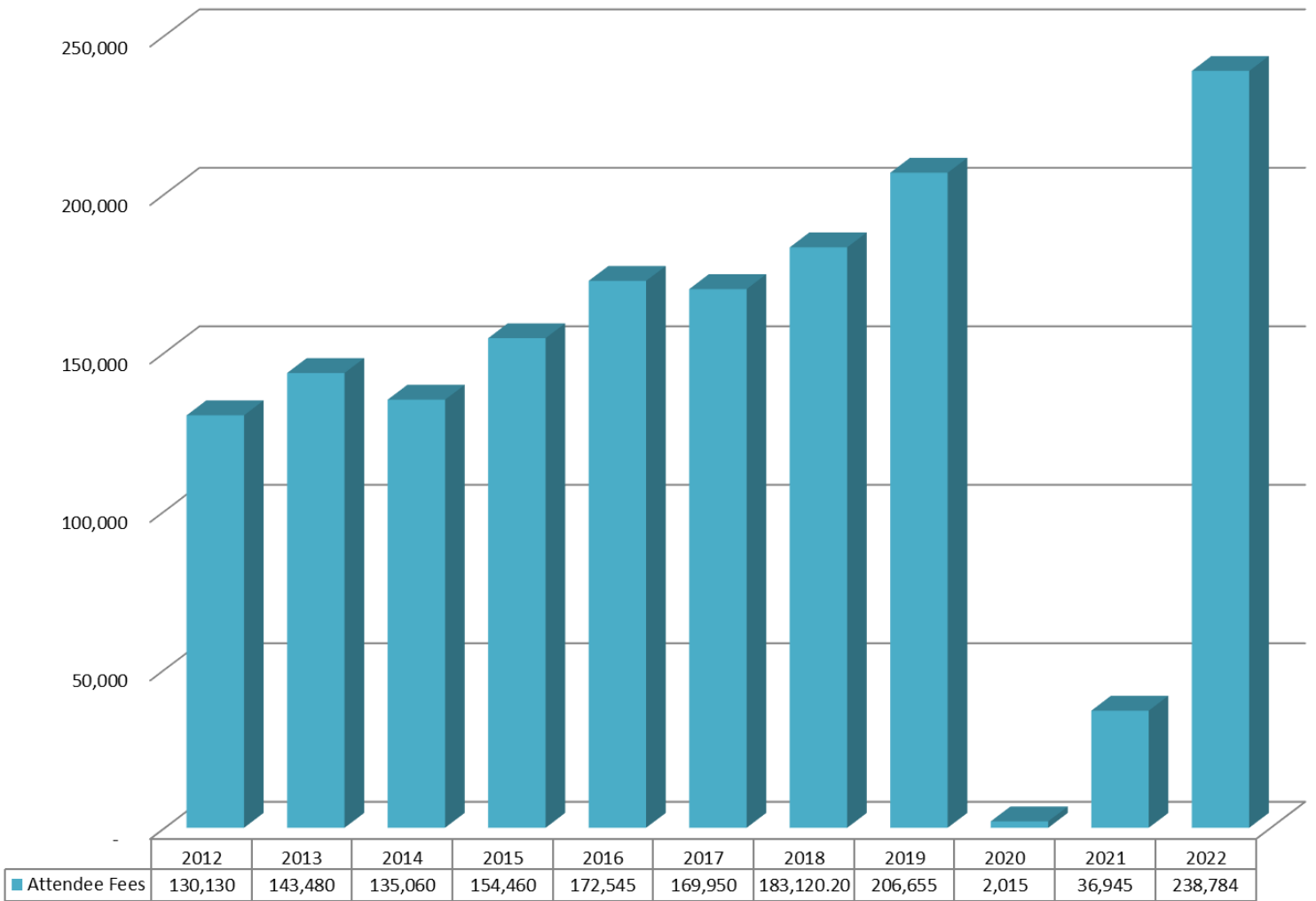
REVENUE FROM EXHIBIT FEES

Exhibit Fees



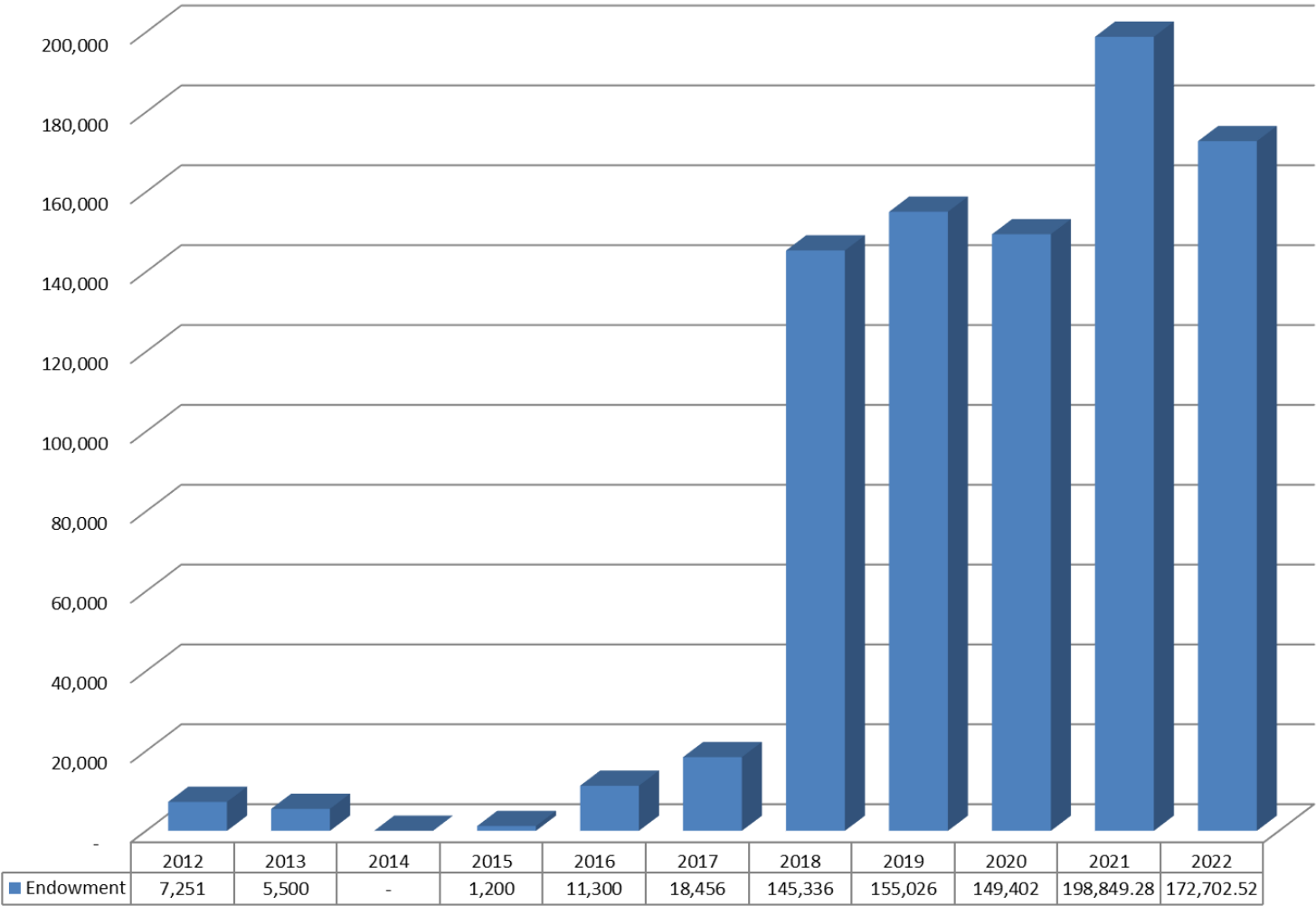
REVENUE FROM ATTENDEE FEES

Attendee Fees



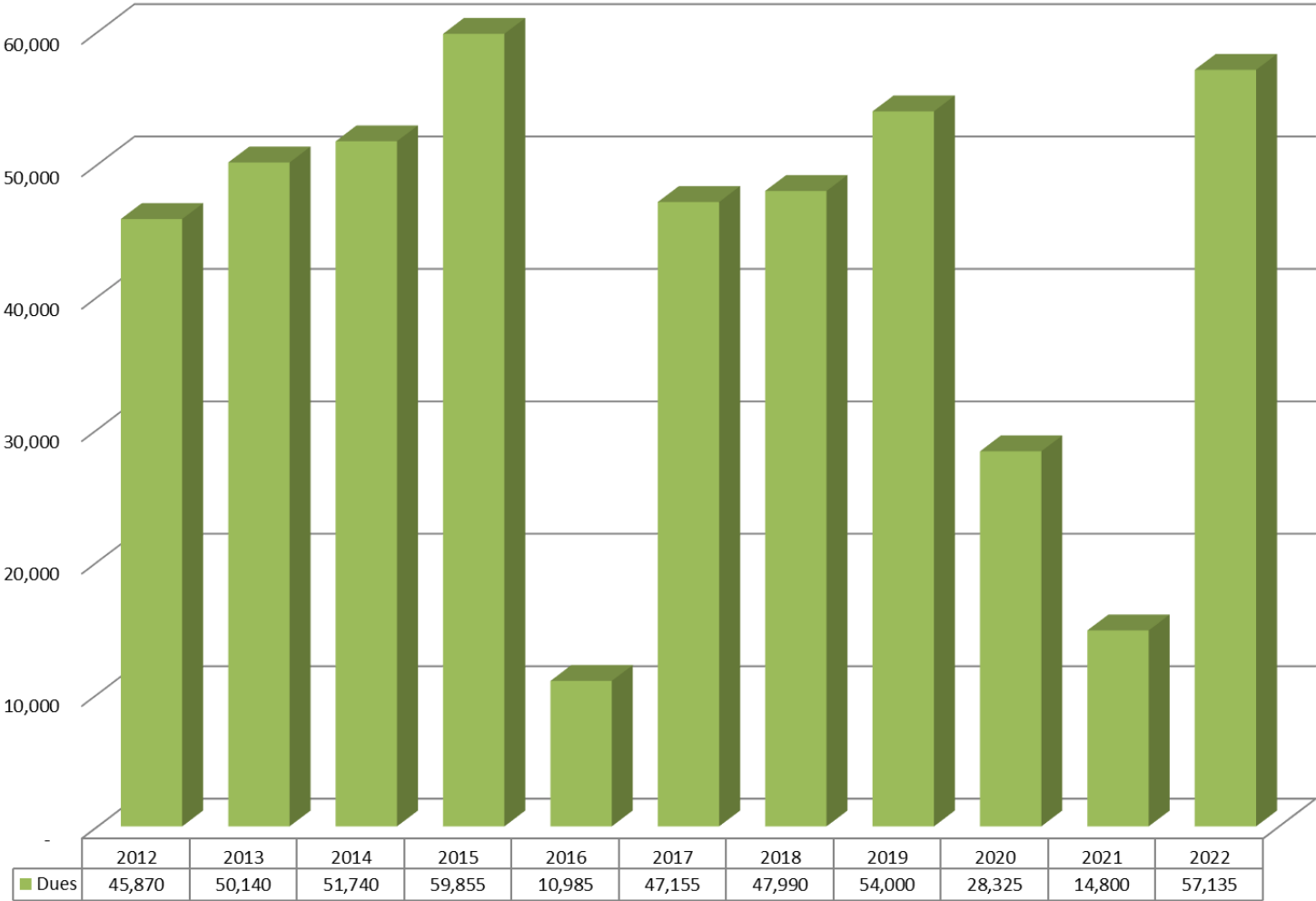
ENDOWMENT FUND BALANCE

Endowment Fund



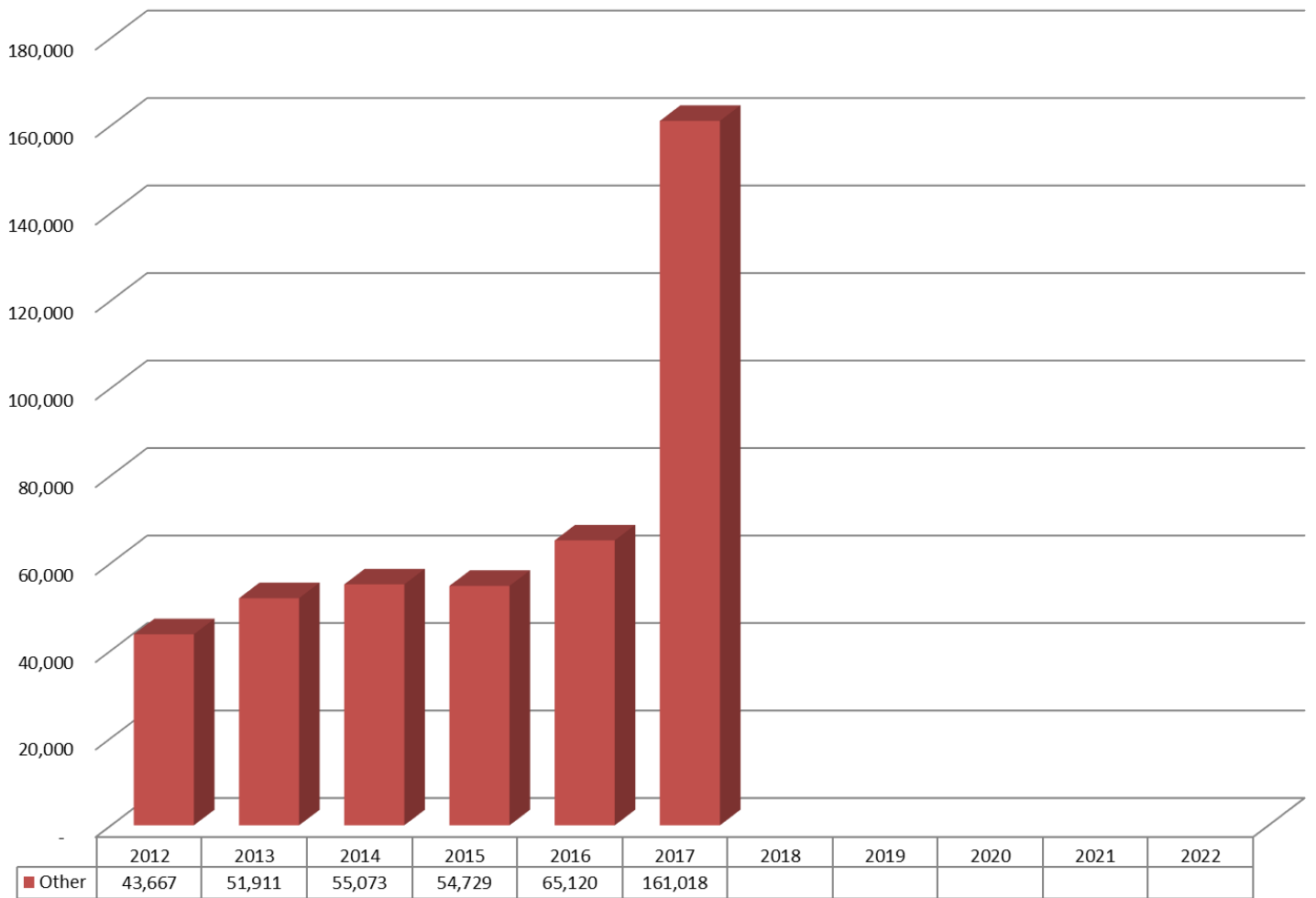
DUES REVENUE

Dues



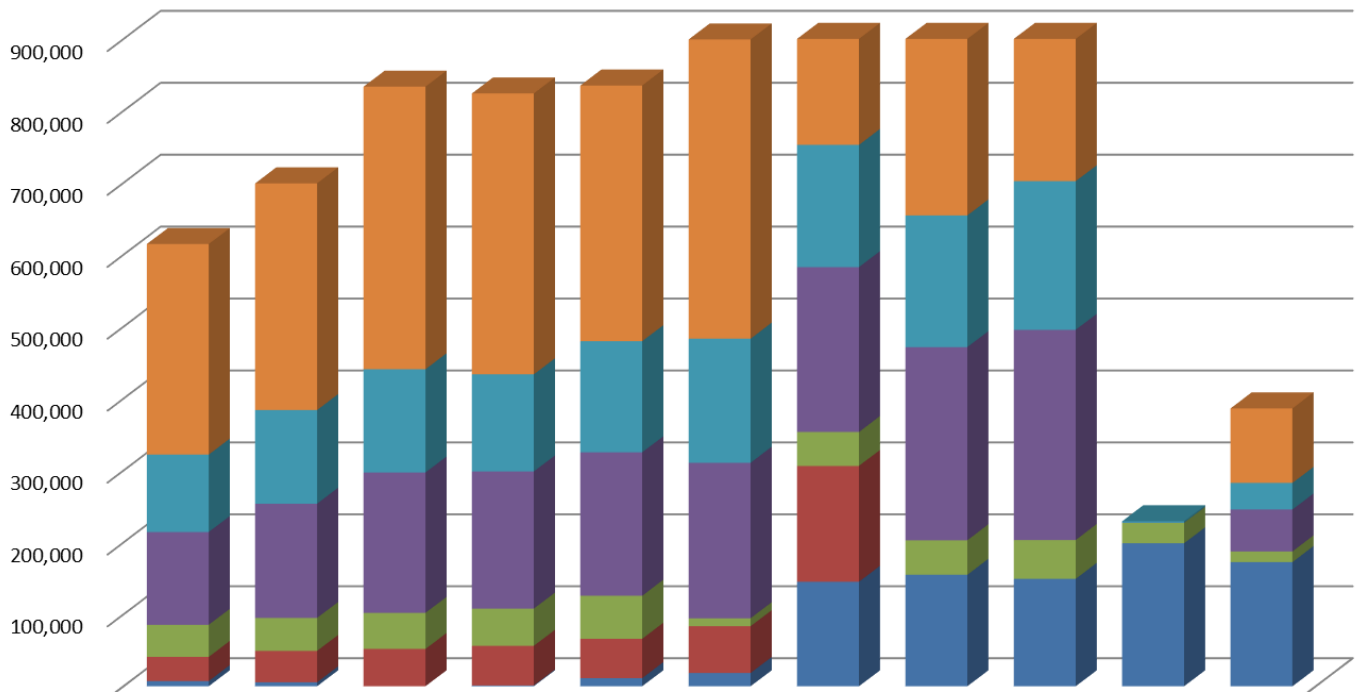
OTHER REVENUES

Other Revenue Streams



TOTAL REVENUE

Total Revenue



	2012	2013	2014	2015	2016	2017	2018	2019	2020	2021	2022
■ Sponsors	292,675	315,250	392,850	390,500	355,500	416,000	432,350	345,690	300,550		103,595
■ Attendee Fees	107,623	130,130	143,480	135,060	154,460	172,545	169,950	183,120.20	206,655	2,015	36,945
■ Exhibits	129,050	158,813	195,250	190,625	199,375	216,150	229,225	268,525	292,160	200	58,300
■ Dues	44,580	45,870	50,140	51,740	59,855	10,985	47,155	47,990	54,000	28,325	14,800
■ Other	33,623	43,667	51,911	55,073	54,729	65,120	161,018				
■ Endowment	7,251	5,500	-	1,200	11,300	18,456	145,336	155,026	149,402	198,849.28	172,702.52

■ Endowment ■ Other ■ Dues ■ Exhibits ■ Attendee Fees ■ Sponsors

KEY FINANCIAL STATISTICS

	2016- 2017	2017- 2018	2018- 2019	2019- 2020	2020- 2021	2021- 2022
RESERVES	1,034,536.03	1,004,614.00	859,522.29	901,381.78	1,310,148.82	957,527.47
OPERATING EXPENSES	204,576.00	295,401.00	285,593.89	320,837.90	198,143.53	260,151.67
RATIO	5.06	3.40	3.01	2.81	6.61	3.68
INCOME	1,021,242.18	956,782.00	963,087.51	42,462.04	213,846.53	914,316.82
EXPENSE	866,184.00	1,006,107.00	693,573.62	1,850,454.00	258,081.13	727,543.53
COMMERCIAL SUPPORT	432,350.00	345,690.00	300,550.00	0.00	103,595.00	232,700
PROGRAM REVENUE	511,237.00	535,312.00	206,655.00	2,015.00	36,945.00	238,764
DUES	47,155.00	41,855.00	54,000.00	28,325.00	14,800.00	57,135
MEMBER MEETING ATTENDANCE	271	271	312	0	238	145
ACTIVE MEMBERS	224	187	215	318	235	364
MEMBER RETENTION %	69.7%	78.1%	71.2%	92.8%	78.3%	92%

BALANCE SHEET

	Jun 30, 22	Jun 30, 21	\$ Change	% Change
ASSETS				
Current Assets				
Checking/Savings				
1010 · Business Premium Market Rate	86,934.87	86,926.17	8.70	0.01%
1030 · Wells PCRS Checking 5963	325,939.96	189,856.31	136,083.65	71.68%
Total Checking/Savings	412,874.83	276,782.48	136,092.35	49.17%
Other Current Assets				
1300 · Prepaid Fees	2,000.00	7,773.12	-5,773.12	-74.27%
Total Other Current Assets	2,000.00	7,773.12	-5,773.12	-74.27%
Total Current Assets	414,874.83	284,555.60	130,319.23	45.8%
Fixed Assets				
1500 · Asset /Web-Site Development	30,000.00	30,000.00	0.00	0.0%
1550 · Equip & Fixed Asset Accum. Depr	-30,000.00	-30,000.00	0.00	0.0%
Total Fixed Assets	0.00	0.00	0.00	0.0%
Other Assets				
1600 · Investments				
Holdings - Scholarship Endowmen				
Schola End Unrealized Gain/Loss	38,506.52	67,112.08	-28,605.56	-42.62%
Scholar Endow - Vanguard	124,843.00	124,843.00	0.00	0.0%
Scholar Endowment Dividends	9,353.00	6,894.20	2,458.80	35.67%
Total Holdings - Scholarship Endowmen	172,702.52	198,849.28	-26,146.76	-13.15%
1610 · Holdings - Investment Fund				
1615 · Inv Fund Unrealized Gain/Loss	149,170.42	474,299.62	-325,129.20	-68.55%
1620 · Investment Fund Dividends	35,654.53	35,654.53	0.00	0.0%
1630 · Investments Fund	600,000.00	600,000.00	0.00	0.0%
Total 1610 · Holdings - Investment Fund	784,824.95	1,109,954.15	-325,129.20	-29.29%
Total 1600 · Investments	957,527.47	1,308,803.43	-351,275.96	-26.84%
Total Other Assets	957,527.47	1,308,803.43	-351,275.96	-26.84%
TOTAL ASSETS	1,372,402.30	1,593,359.03	-220,956.73	-13.87%
LIABILITIES & EQUITY				
Liabilities				
Current Liabilities				
Accounts Payable				
2000 · Accounts Payable	565.27	42,099.33	-41,534.06	-98.66%
Total Accounts Payable	565.27	42,099.33	-41,534.06	-98.66%
Other Current Liabilities				
2500 · Deferred Dues				
2580 · Dues 2022	0.00	14,920.00	-14,920.00	-100.0%
Total 2500 · Deferred Dues	0.00	14,920.00	-14,920.00	-100.0%
Total Other Current Liabilities	0.00	14,920.00	-14,920.00	-100.0%
Total Current Liabilities	565.27	57,019.33	-56,454.06	-99.01%
Total Liabilities	565.27	57,019.33	-56,454.06	-99.01%
Equity				
3001 · Fund Balance - Unallocated	258,238.18	-11,191.59	269,429.77	2,407.43%
3050 · Investment Fund	883,651.89	867,356.10	16,295.79	1.88%
3060 · Operating Fund	200,000.00	200,000.00	0.00	0.0%
3070 · Schl. Endowment Fund	194,449.63	190,863.71	3,585.92	1.88%
3900 · Retained Earnings	0.00	-29,444.32	29,444.32	100.0%
Net Income	-164,502.67	318,755.80	-483,258.47	-151.61%
Total Equity	1,371,837.03	1,536,339.70	-164,502.67	-10.71%
TOTAL LIABILITIES & EQUITY	1,372,402.30	1,593,359.03	-220,956.73	-13.87%

INCOME

					Annual Meeting	General	Member ship	TOTAL
				Ordinary Income/Expense				
				Income				
				4025 · Donation Income	0.00	100.00	0.00	100.00
				4050 · Dues	0.00	0.00	7,690.00	7,690.00
				4100 · Interest	0.00	0.72	0.00	0.72
				Total Income	0.00	100.72	7,690.00	7,790.72
				Gross Profit	0.00	100.72	7,690.00	7,790.72
				Expense				
				5050 · Bank/Credit Card Processing	0.00	362.36	0.00	362.36
				5225 · Gifts and Awards	779.50	0.00	0.00	779.50
				5325 · Management Services	0.00	17,167.00	0.00	17,167.00
				5400 · Postage and Mailing	0.00	37.08	0.00	37.08
				5425 · Printing/Duplicating	7,241.76	5.65	0.00	7,247.41
				5435 · Professional Services	4,490.67	0.00	0.00	4,490.67
				5450 · Scholarship Expense	525.00	0.00	0.00	525.00
				5525 · Storage	0.00	81.00	0.00	81.00
				5575 · Telecommunications	0.00	110.00	0.00	110.00
				5595 · Travel				
				5625 · Volunteers	395.70	0.00	0.00	395.70
				Total 5595 · Travel	395.70	0.00	0.00	395.70
				Total Expense	13,432.63	17,763.09	0.00	31,195.72
				Net Ordinary Income	-13,432.63	-17,662.37	7,690.00	-23,405.00
				Other Income/Expense				
				Other Income				
				7000 · Unrealized Gain/(Loss)	0.00	-120,574.05	0.00	-120,574.05
				Total Other Income	0.00	-120,574.05	0.00	-120,574.05
				Net Other Income	0.00	-120,574.05	0.00	-120,574.05
				Net Income	-13,432.63	-138,236.42	7,690.00	-143,979.05



PACIFIC COAST
REPRODUCTIVE
SOCIETY