



2026 PCRS ANNUAL MEETING

REPRODUCTIVE FRONTIERS:

BRIDGING BIOLOGY, PRACTICE, AND POSSIBILITY

MARCH 18-22 | RANCHO MIRAGE, CA

Sponsorship Handbook

Specifications & Deadlines



PACIFIC COAST
REPRODUCTIVE
SOCIETY

Table of Contents

Logo - Printed Materials	3
Decals	3
Columns	4
Doors	4
Windows	5
Walkway	5
Pinz & Pints	6
Delegate Bag Inserts	7
Key Cards & Holders	8
Lanyards	8
Mobile App	9
Banner Ad	9
Notification Messages	9
Program Booklet Ad	10
Recharge Lounge	10
Spotlight Email	11
Tote Bags	11
TV Channel	12
Vitality Newsletter Ads	12
Website Ads	13
Banner	13
Sidebar	13
Wi-Fi	14

LOGO - PRINTED MATERIALS

DUE BY: FEBRUARY 5, 2026

Upload your organization's logo for use on printed materials included with your sponsorship. Depending on the sponsorship, this may include signage, program booklet, cocktail napkins, drink tickets, and/or sports towels.

LOGO SPECS

Resolution: Min. of 300 dpi

File Format: Vector (.ai, .eps, .pdf, .svg)

[LOGO UPLOAD](#)

DECALS

ARTWORK FILES DUE BY: FEBRUARY 16, 2026

ARTWORK SPECS

Resolution: Min. of 300 dpi

File Format: Vector (.ai, .eps, .pdf, .svg)

[UPLOAD DECAL ARTWORK](#)



DECALS

COLUMN WRAPS

Custom full column wraps located along exterior entrance to exhibit hall.

Sponsorships (map on pg. 3)

- Main: CM-1, CM-2, CM-3, CM-4, CM-5, CM-6
- Side - East: CE-1, CE-2
- Side - West: CW-1, CW-2
- Rear - East: CE-3, CE-4
- Rear - West: CW-3, CW-4



COLUMN SPECS

Quantity: Varies (see above)

Decal Size: 98" tall x 57.75"



DOOR DECALS

Custom decals on exhibit hall patio doors. Each sponsorship includes double-sided side panels and double-sided door pane decals.

Sponsorships (map on pg. 3)

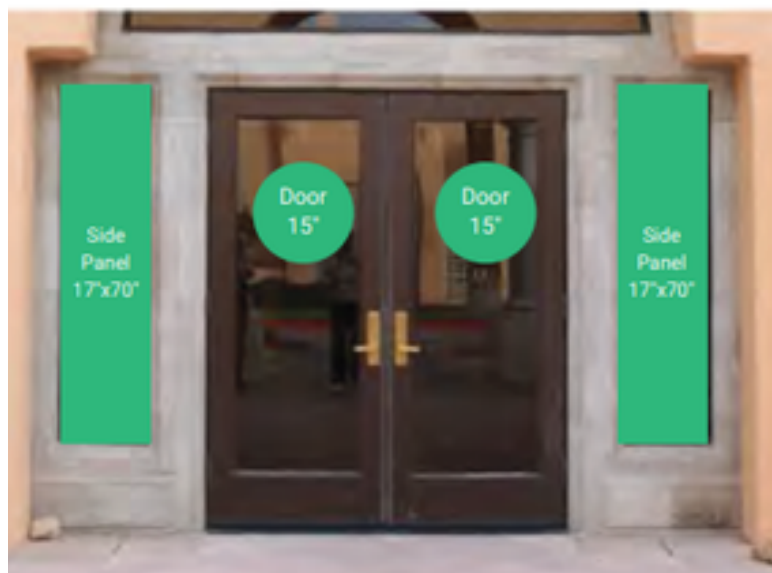
- East Patio Door #1: DE-1
- East Patio Door #3: DE-3
- East Patio Door #5: DE-5
- West Patio Door #1: DW-1
- West Patio Door #3: DW-3
- West Patio Door #5: DW-5

SIDE PANEL SPECS

- **Quantity:** 4 (2 inside, 2 outside)
- **Decal Size:** 17" x 70"

DOOR PANEL SPECS

- **Quantity:** 4 (2 inside, 2 outside)
- **Decal Size:** 15" circle



DECALS

WINDOW DECALS

Custom decals on exhibit hall patio window. Each sponsorship includes your choice of double-sided circle OR ribbon decal.

Sponsorships (map on pg. 3)

- East Patio Window #2: WE-2
- East Patio Window #4: WE-4
- West Patio Window #2: WE-2
- West Patio Window #4: WE-4

OPTION 1: CIRCLE SPECS

- **Quantity:** 2 (1 inside, 1 outside)
- **Decal Size:** 50" circle

OPTION 2: RIBBON SPECS

- **Quantity:** 2 (1 inside, 1 outside)
- **Decal Size:** 130.5" x 15"



WALKWAY DECALS

Custom decals in your choice of shape located on main exterior walkway.

Sponsorships

- 6
- 7
- 8
- 9
- 13
- 12
- 14
- 15
- 16



DECAL SPECS

Quantity: 4

Decal Size: Max of 24" x 24" (custom shapes available)

DECALS

PINZ & PINTS

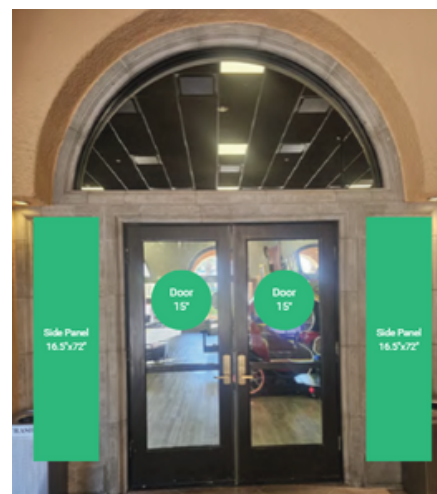
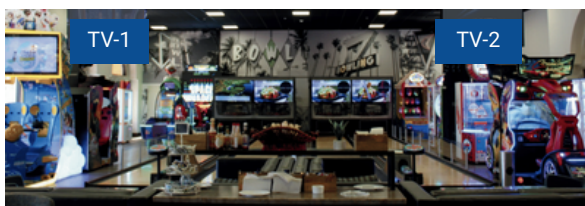
Custom double-sided side panels and double-sided door pane decals plus TV screen graphics.

Sponsorship Includes

- DP-1 Side Panels & Doors
- DP-2 Side Panels & Doors
- DP-3 Side Panels & Doors
- TV-1
- TV-2

Optional Add-Ons

- WP-1
- WP-2
- WP-3
- WP-4
- WP-5



TV GRAPHIC SPECS

Size: 1920x1080 pixels

File Type: .ppt

DOOR DECAL SPECS

Side Panels

- **Quantity:** 12 (3 sets of doors, 2 side panels each, front & back of each panel)
- **Decal Size:** 16.25" x 72"

Door Panes

- **Quantity:** 12 (3 sets of doors, 2 panes each, front & back of each pane)
- **Decal Size:** 15" circle

OPTIONAL ADD-ON

Window Ribbons

- **Quantity:** Max of 10 (5 windows, front & back of each)
- **Decal Size:** 128" x 15"

DELEGATE BAG INSERTS

DEADLINE FOR INSERTS TO ARRIVE: MARCH 11, 2026

Sponsorships: Included with Diamond, Ruby, Emerald, and Sapphire partnership levels or can be purchased as an add-on.

Opportunity to include promotional flyer, pamphlet, or swag item in attendee tote bags. Sponsor is responsible for producing and shipping item and all related costs.

INSERT SPECS

Max. Item/Document Size: 8.5" x 11"

Max. Number of Pages: 10

Quantity Needed: 1000

SHIPPING DETAILS

Inserts should be mailed to the Steele Tradeshows advance warehouse. Log in to the [Steele Tradeshows exhibitor portal](#) to print pre-filled shipping labels and view pricing details for material handling.

Steele Tradeshows will accept your materials at the below address from **February 16, 2026 - March 11, 2026**. The warehouse will accept freight shipments from 8:30 AM to 4:00 PM, Monday through Friday.

[DOWNLOAD SHIPPING LABEL](#)

KEY CARDS & HOLDERS

ARTWORK DUE BY: FEBRUARY 5, 2026

PROOF APPROVAL DEADLINE: FEBRUARY 13, 2026

Custom hotel key cards and holders featuring your provided artwork.

KEY CARDS

Artwork Specs: See Template

KEY CARD HOLDERS

Artwork Specs: See Template

[KEY CARD TEMPLATE](#)

[CARD HOLDER TEMPLATE](#)

[SUBMIT ARTWORK](#)

LANYARDS

ARTWORK DUE BY: FEBRUARY 5, 2026

PROOF APPROVAL DEADLINE: FEBRUARY 13, 2026

Company logo featured on attendee lanyards co-branded with the PCRS logo.

LOGO SPECS

Layout: Horizontal logo preferred

Color: Full Color & Single Color Option

Resolution: Min. of 300 dpi

File Format: Vector (.ai, .eps, .pdf, .svg)

[LOGO UPLOAD](#)

MOBILE APP - BANNER AD

DUE BY: FEBRUARY 20, 2026

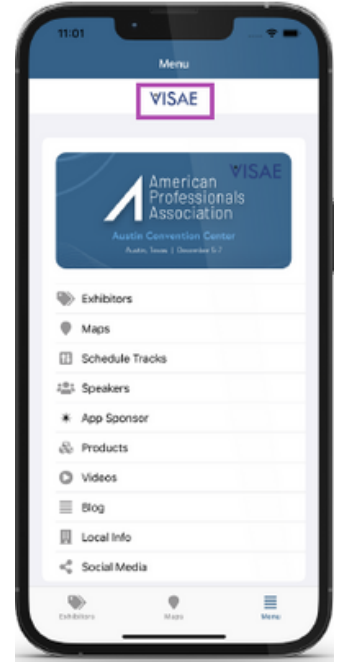
Sponsorship: Mobile App

Clickable banner ad that can link to your booth profile or website located at top of mobile app.

AD SPECS

Size: 600 x 80 pixels

File Format: .png



[SUBMIT AD & HYPERLINK](#)

MOBILE APP - NOTIFICATION MESSAGE

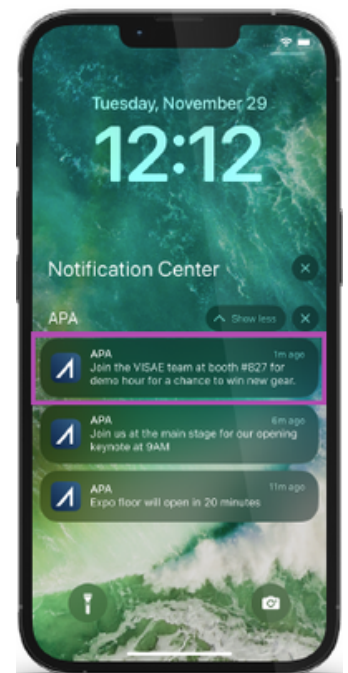
DUE BY: MARCH 5, 2026

Sponsorship: A la carte

Custom message sent through the conference mobile app to all users. Messages can feature up to 300 characters.

MESSAGE SPECS

Text Length: Max of 300 characters



[SUBMIT NOTIFICATION](#)

PROGRAM BOOKLET AD

DUE BY: FEBRUARY 5, 2026

Sponsorships: Available to Diamond level partners only.

Full page color ad featured in the printed program booklet.

AD SPECS

Size: 8.5" X 11" Full Page Ad

File Format: .pdf

[SUBMIT AD](#)

RECHARGE LOUNGE

DUE BY: FEBRUARY 16, 2026

Custom decals on table tops located in the exhibit hall Recharge Lounge.

ARTWORK SPECS

Table #1 Size:

Table #2 Size:

Table #3 Size:

Print Area: See templates

File Format: .pdf

[**DOWNLOAD TEMPLATES**](#)

[SUBMIT ARTWORK](#)

SPOTLIGHT EMAIL - PRE & POST CONFERENCE

DUE BY: FEBRUARY 20, 2026

Sponsorships: Available to Diamond level partners only.

Pre and post conference emails featuring your provided content sent to all conference registrants 1-2 weeks before and after conference.

EMAIL SPECS

Message Content: Preferred text length is between 250-300 words. Any images should be at least 600 pixels wide. You will be provided a proof of the email for review and approval prior to it being sent.

File Format: Provide html code of message content for pre and post conference emails in separate Word Documents.

[SUBMIT EMAIL CONTENT](#)

TOTE BAGS

ARTWORK DUE BY: FEBRUARY 5, 2026

PROOF APPROVAL DEADLINE: FEBRUARY 13, 2026

Company logo or other provided graphic featured on attendee tote bags co-branded with the PCRS conference logo.



ARTWORK SPECS

Imprint Color: White, Single-Color

Bag Color: Royal Blue

Logo Size: 8" W x 2" H

Resolution: Min. of 300 dpi

File Format: Vector (.ai, .eps, .pdf, .svg)



[SUBMIT LOGO OR ARTWORK](#)

TV CHANNEL

DUE BY: FEBRUARY 20, 2026

Your provided content featured on channel 45 on all guest room TVs. Content will be reviewed for approval by hotel.

CONTENT SPECS

Size: 1920 x 1080 pixels

File Format: .mp4

SUBMIT TV CHANNEL CONTENT

VITALITY NEWSLETTER ADS

SUMMER AD DUE BY: MAY 25, 2026

WINTER AD DUE BY: NOVEMBER 5, 2026

Sponsorships: Available to Diamond and Ruby level partners only.

AD SPECS - DIAMOND

Issues: Summer & Winter

Hyperlink: Can be linked to your desired URL

Size: 1000 x 500 pixels

File Format: .png

AD SPECS - RUBY

Issues: Summer

Hyperlink: Can be linked to your desired URL

Size: 500 x 250 pixels

File Format: .png

SUBMIT AD & HYPERLINK

WEBSITE BANNER AD

DUE BY: FEBRUARY 20, 2026

Sponsorships: Available to Diamond level partners only.

Clickable banner ad featured at the top of all conference webpages (excluding CME page).

AD SPECS

Hyperlink: Can be linked to your desired URL

Size: 960 x 154 pixels

File Format: .png

[SUBMIT AD & HYPERLINK](#)

WEBSITE SIDEBAR AD

DUE BY: FEBRUARY 20, 2026

Sponsorships: A la carte

Clickable rotating ad featured in the sidebar of all conference webpages (excluding CME page).

AD SPECS

Hyperlink: Can be linked to your desired URL

Size: 875 x 875 pixels

File Format: .png

[SUBMIT AD & HYPERLINK](#)

WIFI

DUE BY: FEBRUARY 5, 2026

Ability to customize Wi-Fi password and re-direct users to your company website after login.

PASSWORD SPECS

Password: Minimum of 8 characters in length, letters and numbers only, no special characters.

SUBMIT PASSWORD & URL